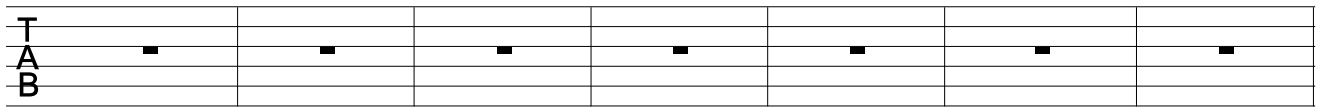


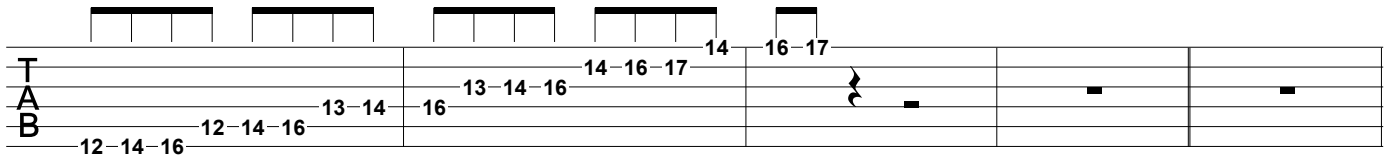
Carl Roa - High Intensity Rock - Lead Guitar



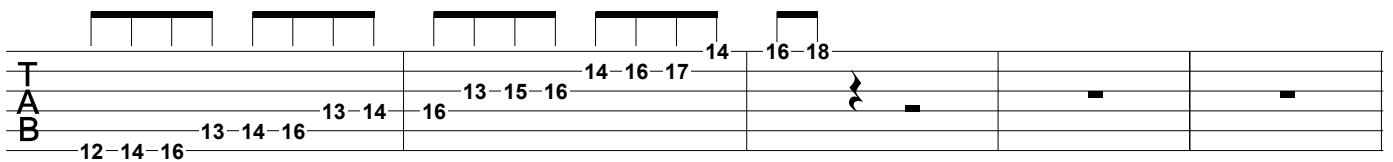
Lead Playing Over Major Chords

E Major / E Maj 7th

E Major Scale (1,2,3,4,5,6,7)

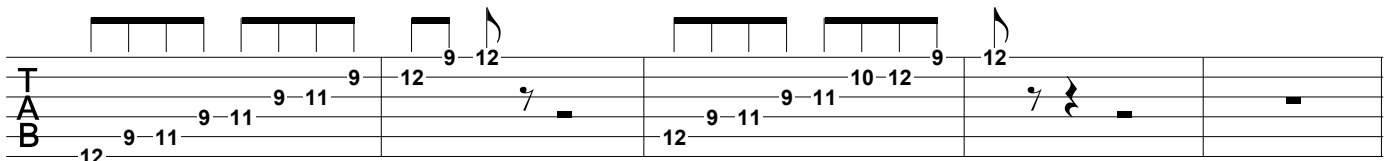


E Lydian Scale (1,2,3,#4,5,6,7)

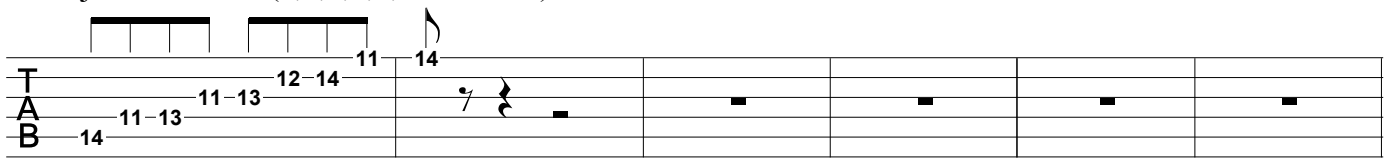


E Major Pentatonic (1,2,3,5,6)

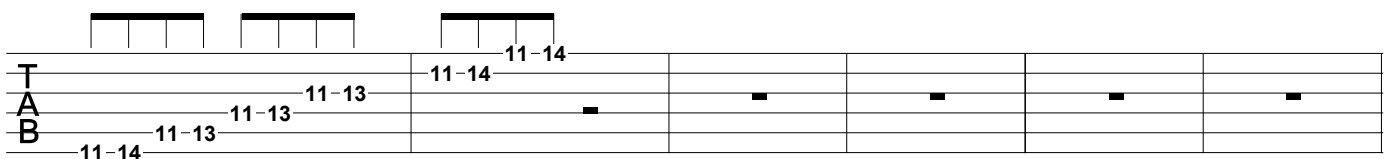
A Major Pentatonic (1,2,3,4,5,6 - From A)



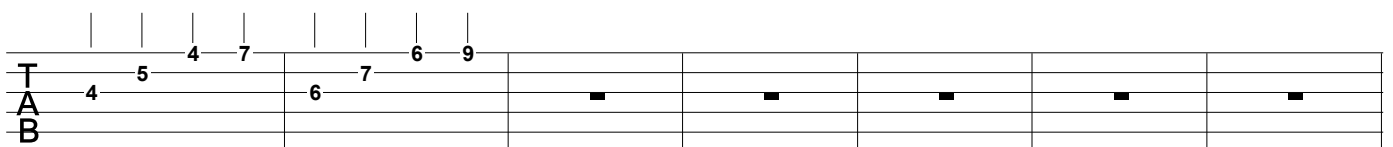
B Major Pentatonic (1,2,3,4,5,6 - From B)



D# Minor Pentatonic (1,b3,4,5,b7)



Emajor Triad and F# Major Triad (extentions 9,#11,13 over E Major)



Lead Playing Over Minor Chords

E Minor / E Min 7th

E Dorian (1,2,b3,4,5,6,b7)

The following Pentatonics can be played over an E Minor to create a Dorian sound

E Minor Pentatonic (1,b3,4,5,b7)

F# Minor Pentatonic (1,b3,4,5,b7 - from F#)

B Minor Pentatonic (1,b3,4,5,b7 - from B)

I relate Melodic Minor to the Dorian Scale. Similiar to Dorian with a natural 7th degree.

E Melodic Minor (1,2,b3,4,5,6,7)

Aeolian has a darker sound than Dorian

E Aeolian / Natural Minor (1,2,b3,4,5,b6,b7)

Minor Chords Continued ...

I relate the sound of Harmonic Minor to the Aeolian Scale with a natural 7th degree
 E Harmonic Minor (1,2,b3,4,5,b6,7)

Fingerboard diagram for E Harmonic Minor scale (1,2,b3,4,5,b6,7). The diagram shows fret positions and fingering for the scale across the guitar neck. The low strings (E, A, D) are fretted at 12, 14, and 15. The high strings (G, B, E) are fretted at 12, 14, 16, 17, and 15. Fingering is indicated by numbers 1-4 on the strings.

The Blues Scale is very related to the Pentatonic Scale.
 Can think of the Blues Scale as a Pentatonic with a b5th added.

E Blues Scale (1,b3,4,b5,5,b7)

Fingerboard diagram for E Blues Scale (1,b3,4,b5,5,b7). The diagram shows fret positions and fingering for the scale across the guitar neck. The low strings (E, A, D) are fretted at 12, 13, 14, and 15. The high strings (G, B, E) are fretted at 12, 14, and 15. Fingering is indicated by numbers 1-4 on the strings.

E minor Triad and F# Minor Triad. F# Minor Triad will accentuate the Dorain sound

E Minor Triad

F# Minor Triad

Fingerboard diagram showing E Minor Triad and F# Minor Triad. The E Minor Triad is shown on frets 4, 5, 7, 3. The F# Minor Triad is shown on frets 6, 7, 5, 9.

Empty guitar neck diagram for practice.

Playing over Dominant 7th Chords

E Mixolydian (1,2,3,4,5,6,b7)

It is a cool sound to switch between Minor and Major Pentatonics / Blues over a Dominant 7th Chord

E Minor Pentatonic

E Major Pentatonic

For that fusion sound, Lydian Dominant is great. I relate this scale to Mixo with a #4

E Lydian Dominant (1,2,3,#4,5,6,b7)

For playing over a Dominant 7th with Altered Extensions (b9,#9,b13), the Altered Scale works well

E Altered Dominant (1,b2,#2,3,#4,b6,b7)

Voice Leading

Try connecting arpeggio based lines to create a solo that outlines the chord changes. Make transition between chords smooth by playing lines that resolve by a half or whole step.

E7

A7

Tablature for E7 and A7 voice leading. The first measure is for E7 and the second for A7. The strings are labeled T (Treble), A (Middle), and B (Bass). The notes and fingerings are as follows:

String	E7 Measure	A7 Measure
T	5, 4, 7	5, 8
A	4, 7, 5	6, 5, 8
B	7, 6, 4	7, 6, 5, 8

Simple Voice Leading between I7 / IV7

E7

A7

Tablature for simple voice leading between E7 and A7. The first measure is for E7 and the second for A7. The strings are labeled T (Treble), A (Middle), and B (Bass). The notes and fingerings are as follows:

String	E7 Measure	A7 Measure
T	4, 5, 7, 4, 5, 7, 4	6, 5, 8, 5, 9, 5, 8, 5
A	6, 4, 7, 4, 5, 7, 4	6, 5, 8, 5, 9, 5, 8, 5
B	7, 6, 4, 7, 4, 5, 7, 4	6, 5, 8, 5, 9, 5, 8, 5

E7

Tablature for E7 voice leading. The first measure is for E7. The strings are labeled T (Treble), A (Middle), and B (Bass). The notes and fingerings are as follows:

String	E7 Measure
T	4, 5, 7, 4, 5, 5, 5
A	7, 4, 5, 6, 7
B	6, 7

For Carl Roa CD's and DVD please visit carlroa.com

Instructional DVD: Carl Roa - High Intensity Rock - Lead Guitar (BSM-8011)

CD's: Magic Elf - Heavy Meddle (BSM-7021) Carl Roa - Eternity (BSM-8001)